


HANDRAIL PLAN @ F.F. EL. 47'-0
AREA 5-2

- GENERAL NOTES:**
- 1> ALL MATERIALS A-36 UNLESS NOTED OTHERWISE.
 - 2> ALL WELDS CONTINUOUS, TYPE E70XX UNLESS NOTES OTHERWISE.
 - 3> ALL "STUB" (RUNNING) DIM'S ARE FROM END OF MAIN MEMBER (NOT E'S, CLIPS, ETC.), DIMENSION ORIGIN POINT MARKED THUS [●].
 - 4> ALL CLIPS AND SHEAR E'S TO HAVE 1/8" x 1" HORIZONTAL SLOTS (SSL), TYPICAL UNLESS NOTED OTHERWISE.
 - 5> PLACE SHIPPING MKS. RIGHT SIDE UP ON LEFT END OF MEMBER AS DRAWN, TYPICAL UNLESS NOTED OTHERWISE.
 - 6> ALL STEEL CLEANED IN ACCORDANCE WITH SSPC-SP1 & SSPC-SP3. PAINTING SHALL CONSIST OF LONG OR MEDIUM OIL, ALKYD, RUST-INHIBITIVE METAL PRIMER, COLOR=GRAY SHERWIN WILLIAMS E61RC21 RED (MIN. 3 MILS DFT), FOLLOWED BY 1 FINISH COAT OF LONG OIL, ALKYD COATING (MIN 2 MILS DFT) COATING (MIN. 2 MILS DFT) COLOR=GLOSS WHITE SHERWIN WILLIAMS B54 SERIES. HANDRAILS & GUARDS TO BE SAFETY YELLOW.

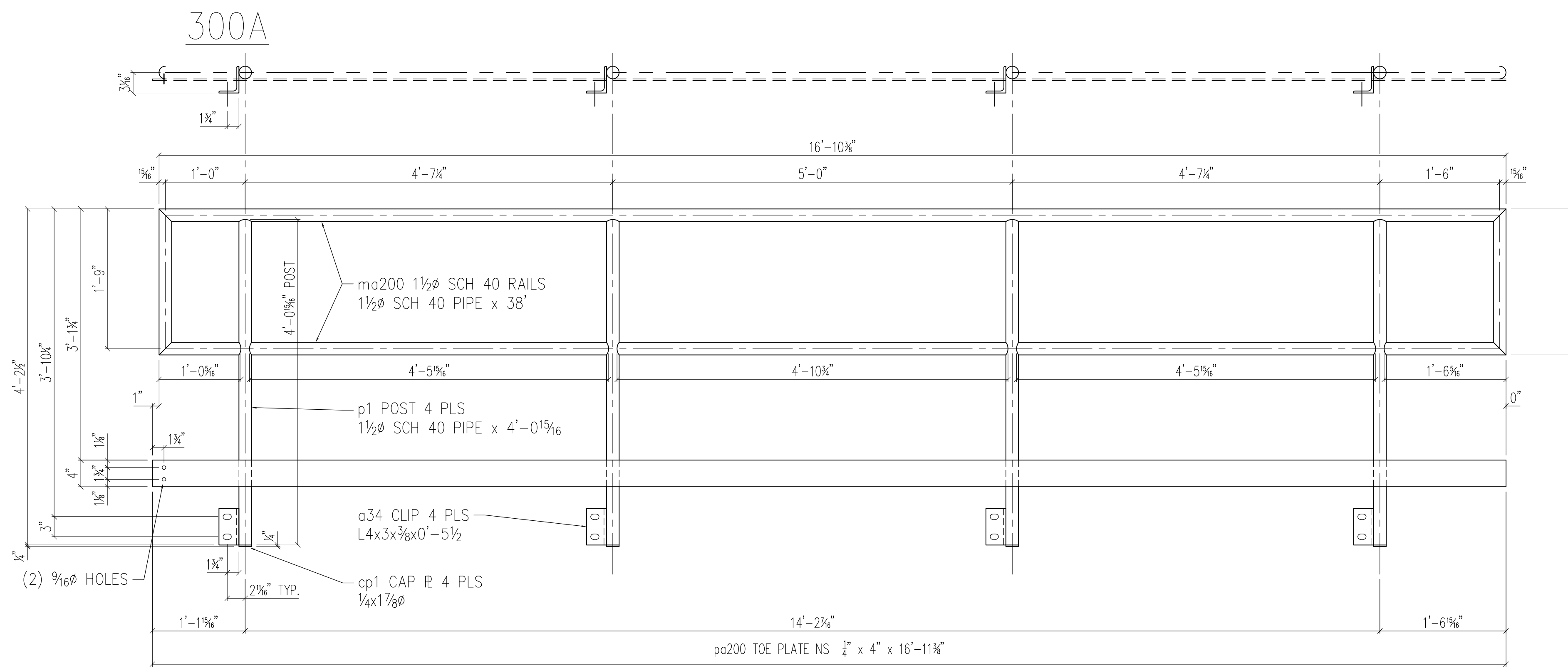
APPROVAL AUTHORITY
UNLESS NOTED OTHERWISE, ALL CLOUDED ITEMS ARE REQUESTS FOR "PROVIDE" OR "VERIFY". ANY SUCH ITEMS NOT PROVIDED OR OTHERWISE NOTED, SHALL BE ASSUMED CORRECT AS SHOWN.

DESCRIPTION				HANDRAIL AREA 5-2 PLAN VIEW				
REF DWG	5644-42000-S06	CUSTOMER/P.O. No.	GYPTTECH					
-ALL WF BEAMS TO BE A992, GR50 -PRIME AND PAINT PER SPECS -ALL PLATES, ANGLES, CHANNELS TO BE A36				1514 Cargill Ave. WILSON, NC 27893 PHONE - (252) 246-0639 FAX - (252) 246-1616				
JOB No.	7728-FS	JOB TITLE	GYPTTECH					
HOLES	1 3/16"	EXC NOTED	LOCATION ROXBORO, NC					
CLEAN SPEC	SEE GENERAL NOTES		ARCH. OR ENGR.	MID-SOUTH ENGINEERING				
FINISH	SEE GENERAL NOTES		DRAWN	MM	DATE	2/1/11	CHKD	DATE
DRY MIL THICKNESS	SEE GENERAL NOTES		STRUCTURE UNSTABLE UNTIL ERECTION IS COMPLETE. ERECTOR TO GUY AS REQUIRED.					
NO.	DATE	REVISION	BY	CHK	APP'D.	ELECTRODE CLASS	E70XX	

DRAWING NO. E114
REV NO. 0

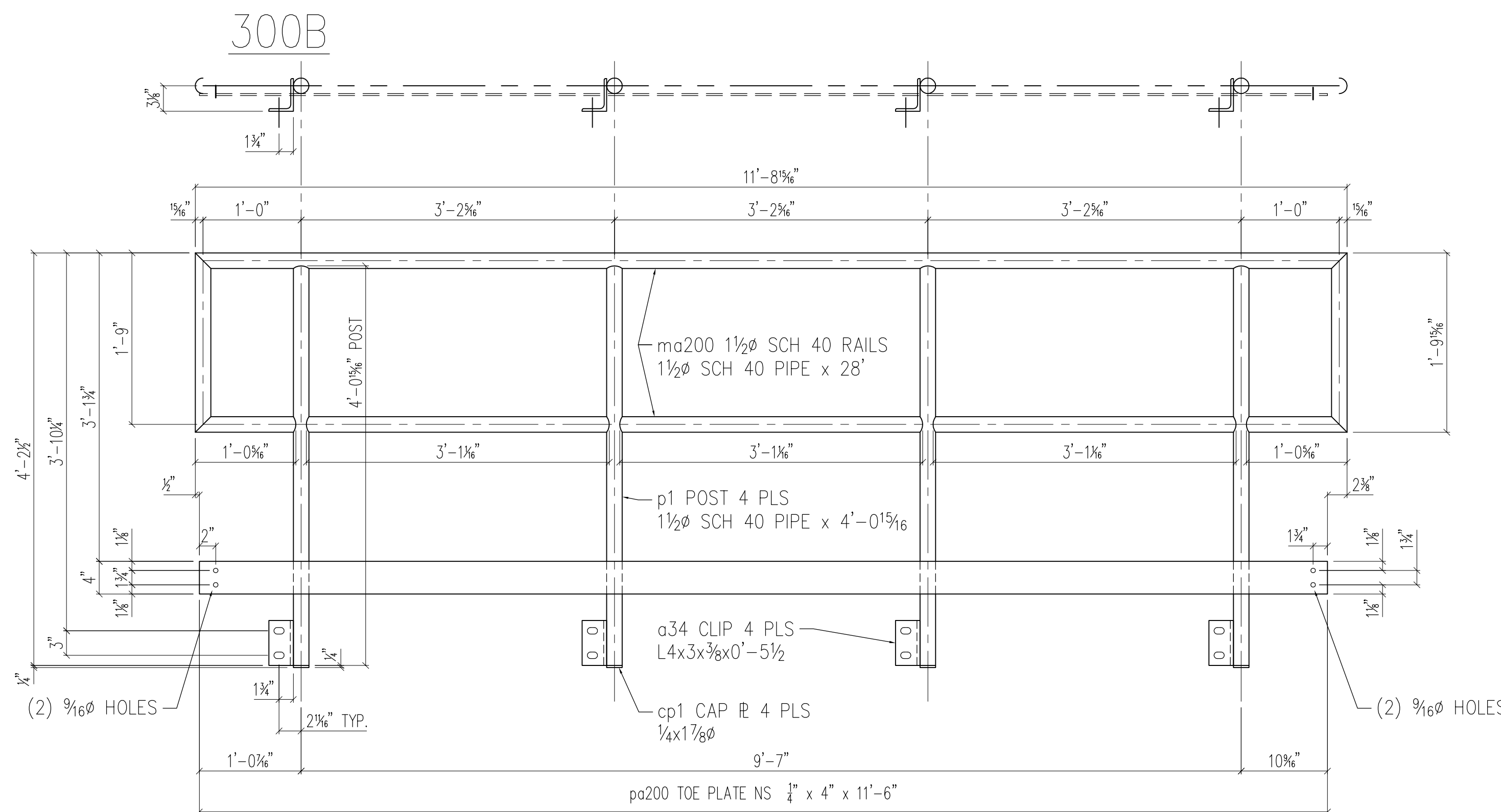
BILL OF MATERIAL

SHIP MK.	SUB MK.	QTY.	MATERIAL	LENGTH		REMARKS	ABM NO.	WT.
				FT.	IN.			
300A		1	HANDRAIL ASSY.					170
	ma200	1	1 1/2" STD PIPE	38	0			
	p1	4	1 1/2" STD PIPE	4	0 9/16	POST		
	pa200	1	BAR 1/4" x 4"	16	11 3/8			
	a34	4	L 4" x 3" x 3/8"	0	5 1/2			
	cp1	4	R 1/4" x 1 7/8"	0	1 7/8			
300B		1	HANDRAIL ASSY.					118
	ma200	1	1 1/2" STD PIPE	28	0			
	p1	4	1 1/2" STD PIPE	4	0 9/16	POST		
	pa200	1	BAR 1/4" x 4"	11	6			
	a34	4	L 4" x 3" x 3/8"	0	5 1/2			
	cp1	4	R 1/4" x 1 7/8"	0	1 7/8			
	a1	15	L 4" x 4" x 1/4"	0	4	SEE DETAIL		118



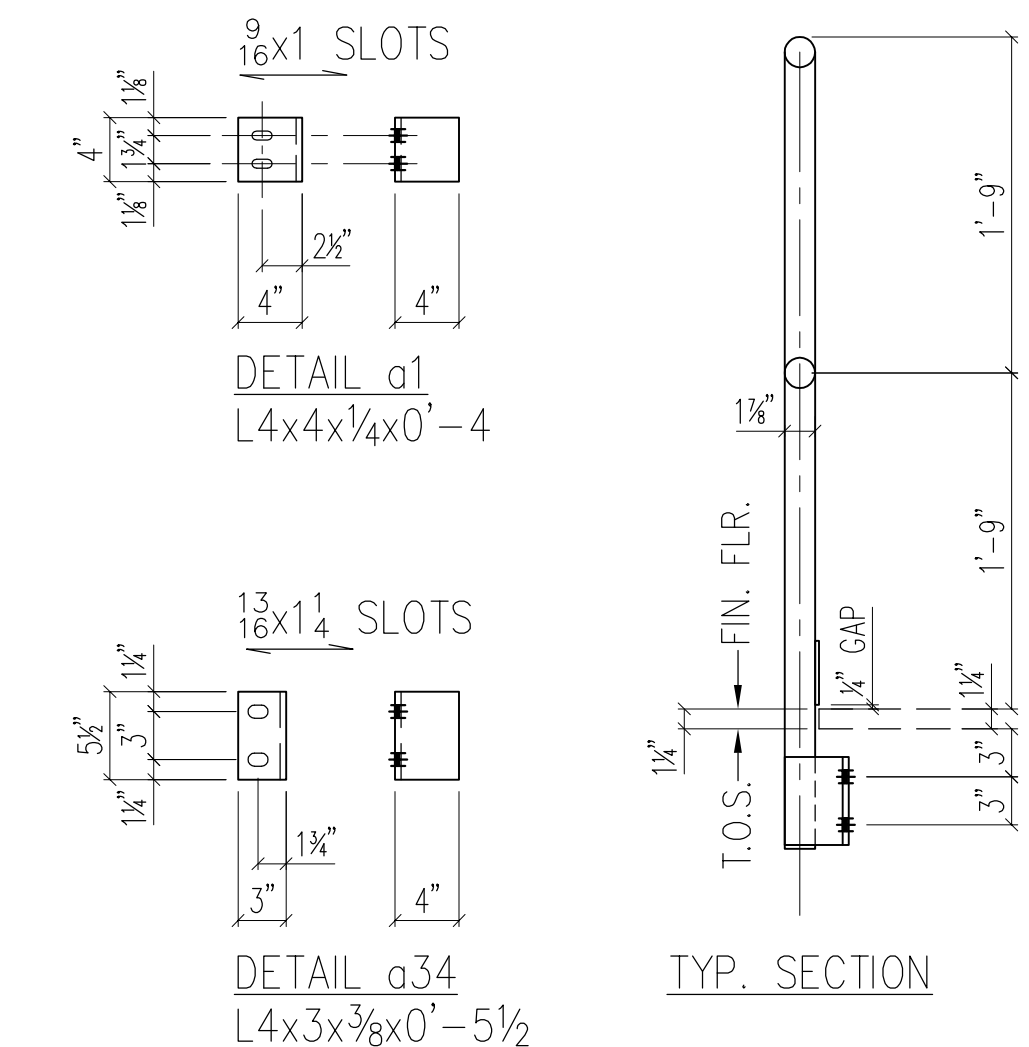
ONE ~ H'RAIL ~ 300A

(3/8" A-325-X BOLT) 8 2 w/(2)FW&HHN EA.
 (3/8" A-307 BOLT) 2 1 1/4 w/(2)FW&HHN EA.




ONE ~ H'RAIL ~ 300B

(3/8" A-325-X BOLT) 8 2 w/(2)FW&HHN EA.
 (3/8" A-307 BOLT) 4 1 1/4 w/(2)FW&HHN EA.



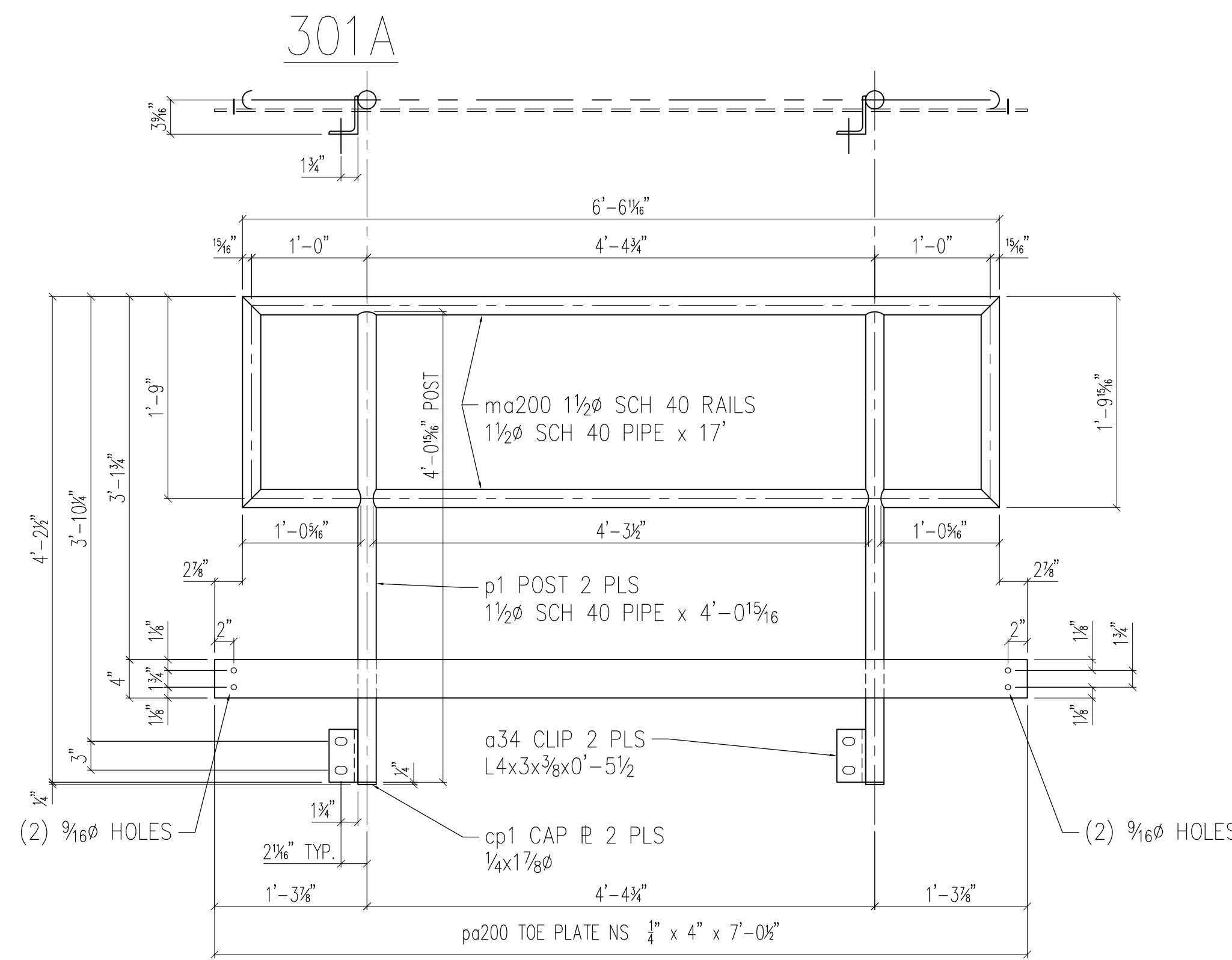
- GENERAL NOTES:
- 1> ALL MATERIALS A-36 UNLESS NOTED OTHERWISE.
 - 2> ALL WELDS CONTINUOUS, TYPE E70XX UNLESS NOTED OTHERWISE.
 - 3> ALL "STUB" (RUNNING) DIM'S ARE FROM END OF MAIN MEMBER (NOT R'S, CLIPS, ETC.), DIMENSION ORIGIN POINT MARKED THUS [●].
 - 4> ALL CLIPS AND SHEAR R'S TO HAVE 1 3/16" x 1" HORIZONTAL SLOTS (SSL), TYPICAL UNLESS NOTED OTHERWISE.
 - 5> PLACE SHIPPING MKS. RIGHT SIDE UP ON LEFT END OF MEMBER AS DRAWN, TYPICAL UNLESS NOTED OTHERWISE.
 - 6> ALL STEEL CLEANED IN ACCORDANCE WITH SSPC-SP1 & SSPC-SP3. PAINTING SHALL CONSIST OF LONG OR MEDIUM OIL, ALKYD, RUST-INHIBITIVE METAL PRIMER, COLOR=GRAY SHERWIN WILLIAMS E61RC21 RED (MIN. 3 MILS DFT), FOLLOWED BY 1 FINISH COAT OF LONG OIL, ALKYD COATING (MIN 2 MILS DFT) COATING (MIN. 2 MILS DFT) COLOR=GLOSS WHITE SHERWIN WILLIAMS B54 SERIES. HANDRAILS & GUARDS TO BE SAFETY YELLOW.

APPROVAL AUTHORITY
 UNLESS NOTED OTHERWISE, ALL CLOUDED ITEMS ARE REQUESTS FOR "PROVIDE" OR "VERIFY". ANY SUCH ITEMS NOT PROVIDED OR OTHERWISE NOTED, SHALL BE ASSUMED CORRECT AS SHOWN.

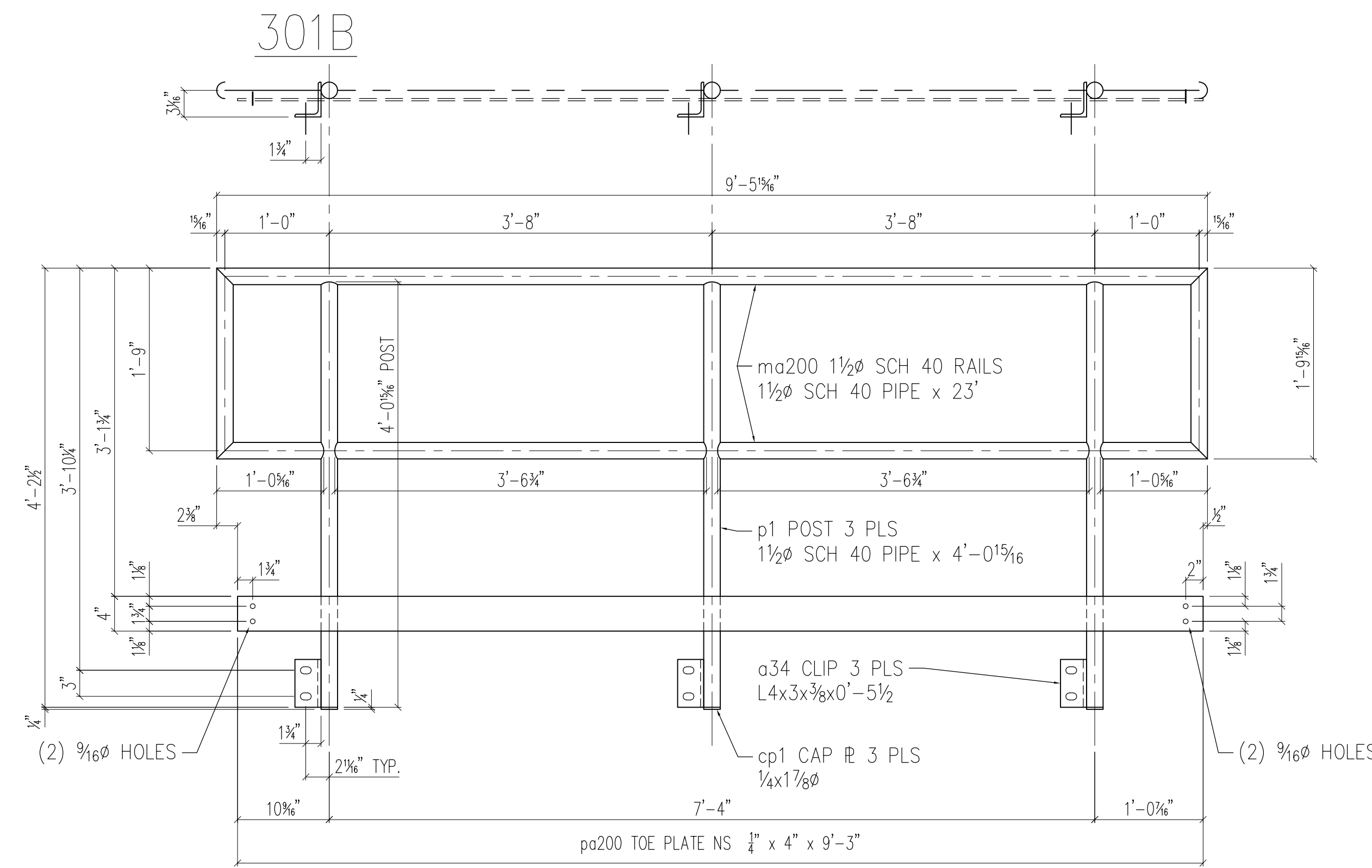
DESCRIPTION		HANDRAIL AREA 5-2	
REF DWG	5644-42000-S06	CUSTOMER/ P.O. No.	GYPTech
-ALL WF BEAMS TO BE A992, GR50 -PRIME AND PAINT PER SPECS -ALL PLATES, ANGLES, CHANNELS TO BE A36		 1514 Cargill Ave. WILSON, NC 27893 PHONE - (252) 246-0639 FAX - (252) 246-1616	
JOB No.	7728-FS	JOB TITLE	GYPTech
HOLES	1 3/16"	EXC NOTED	
CLEAN SPEC	SEE GENERAL NOTES	ARCH OR ENDR.	MID-SOUTH ENGINEERING
FINISH	SEE GENERAL NOTES	DRAWN	MM DATE 2/1/11
DRY MIL THICKNESS	SEE GENERAL NOTES	STRUCTURE UNSTABLE UNTIL ERECTION IS COMPLETE. ERECTOR TO GUY AS REQUIRED.	
NO.	DATE	REVISION	BY APP'D. E70XX

BILL OF MATERIAL

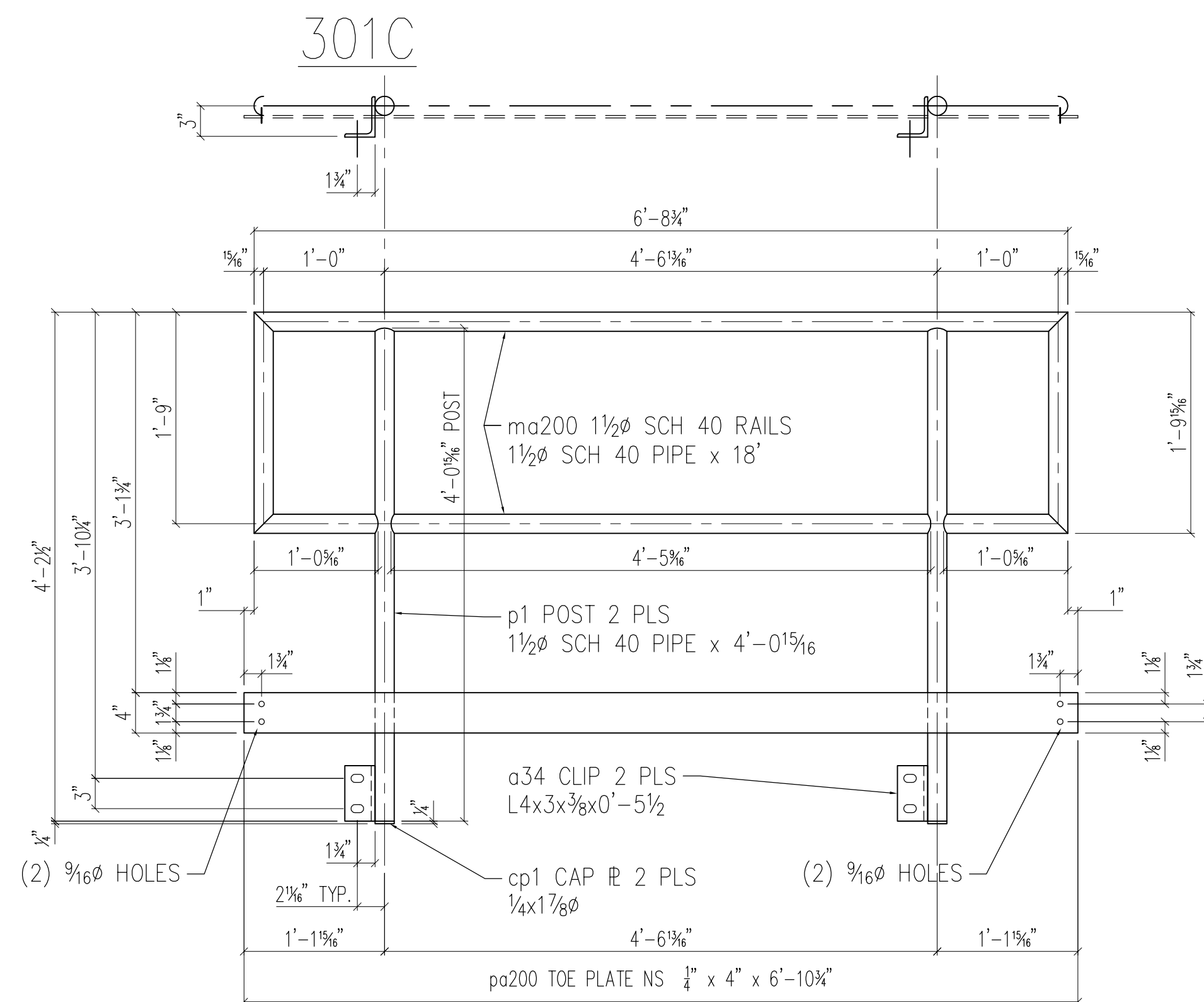
SHIP MK.	SUB MK.	QTY.	MATERIAL	LENGTH		REMARKS	ABM NO.	WT.
				FT.	IN.			
301A		1	HANDRAIL ASSY.					66
	ma200	1	1 1/2" STD PIPE	17	0			
	p1	2	1 1/2" STD PIPE	4	0 9/16	POST		
	pa200	1	BAR 1/4" x 4"	7	0 1/2			
	a34	2	L 4" x 3" x 3/8"	0	5 1/2			
	cp1	2	R 1/4" x 1 7/8"	0	1 7/8			
301B		1	HANDRAIL ASSY.					95
	ma200	1	1 1/2" STD PIPE	23	0			
	p1	3	1 1/2" STD PIPE	4	0 9/16	POST		
	pa200	1	BAR 1/4" x 4"	9	3			
	a34	3	L 4" x 3" x 3/8"	0	5 1/2			
	cp1	3	R 1/4" x 1 7/8"	0	1 7/8			
301C		1	HANDRAIL ASSY.					68
	ma200	1	1 1/2" STD PIPE	18	0			
	p1	2	1 1/2" STD PIPE	4	0 9/16	POST		
	pa200	1	BAR 1/4" x 4"	6	10 3/4			
	a34	2	L 4" x 3" x 3/8"	0	5 1/2			
	cp1	2	R 1/4" x 1 7/8"	0	1 7/8			
301D		1	HANDRAIL ASSY.					128
	ma200	1	1 1/2" STD PIPE	30	0			
	p1	4	1 1/2" STD PIPE	4	0 9/16	POST		
	pa200	1	BAR 1/4" x 4"	12	5 1/2			
	a35	4	L 5" x 3" x 3/8"	0	5 1/2			
	cp1	4	R 1/4" x 1 7/8"	0	1 7/8			



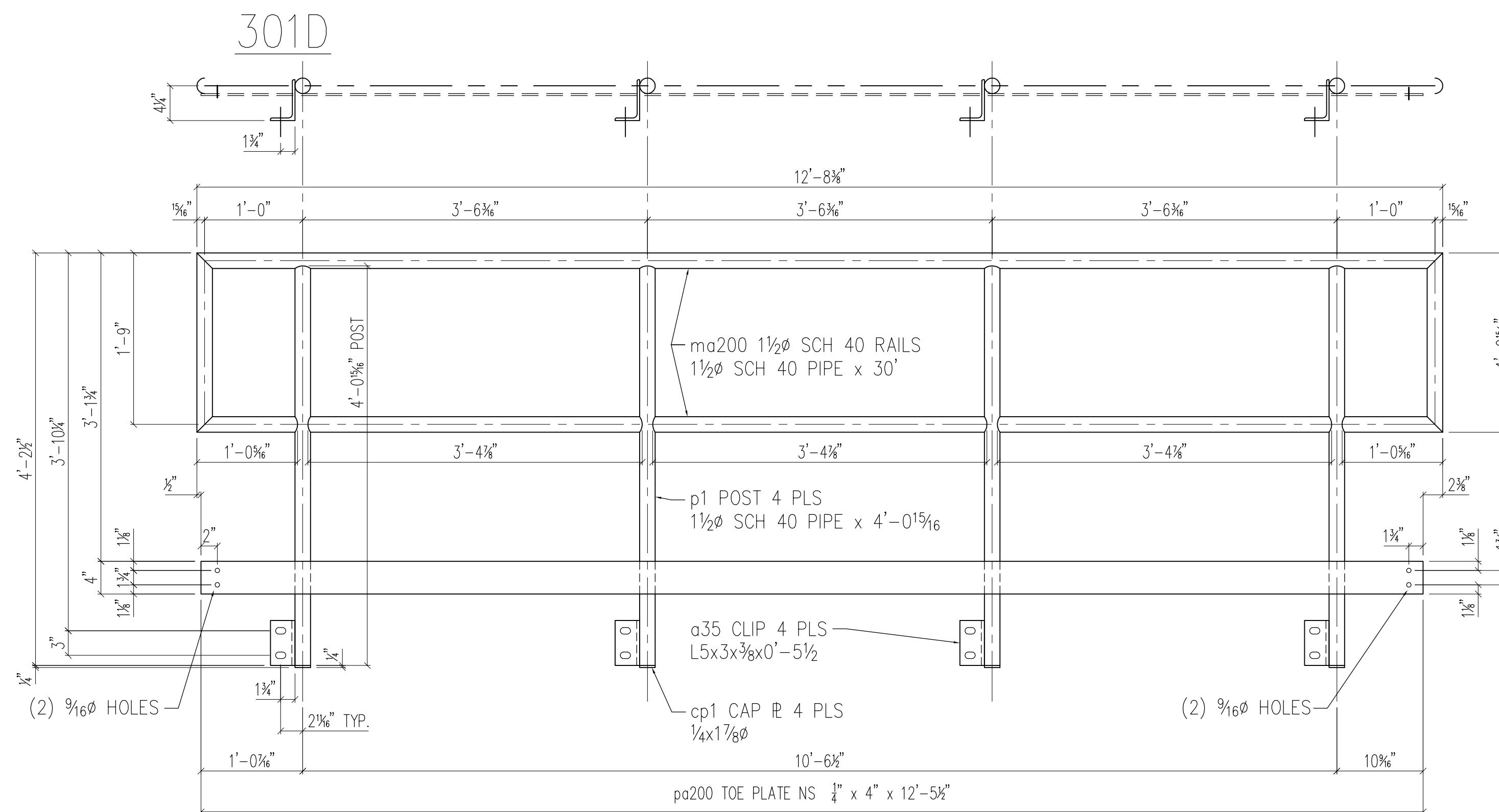
ONE ~ H'RAIL ~ 301A
 (3/8" A-325-X BOLT) (1/2" A-307 BOLT)
 w/(2)FW&HHN EA. w/(2)FW&HHN EA.



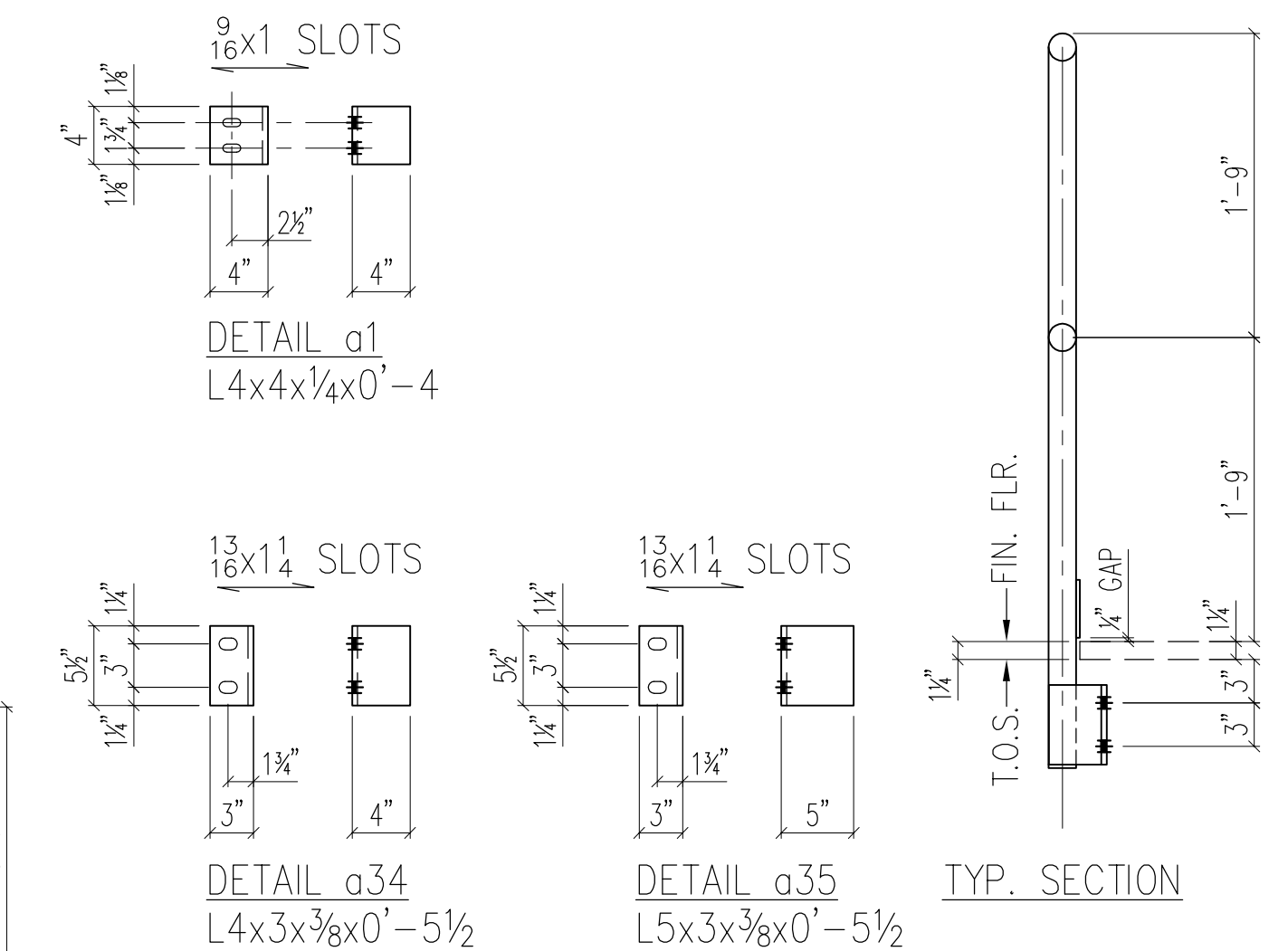
ONE ~ H'RAIL ~ 301B
 (3/8" A-325-X BOLT) (1/2" A-307 BOLT)
 w/(2)FW&HHN EA. w/(2)FW&HHN EA.



ONE ~ H'RAIL ~ 301C
 (3/8" A-325-X BOLT) (1/2" A-307 BOLT)
 w/(2)FW&HHN EA. w/(2)FW&HHN EA.



ONE ~ H'RAIL ~ 301D
 (3/8" A-325-X BOLT) (1/2" A-307 BOLT)
 w/(2)FW&HHN EA. w/(2)FW&HHN EA.



- GENERAL NOTES:
 1> ALL MATERIALS A-36 UNLESS NOTED OTHERWISE.
 2> ALL WELDS CONTINUOUS, TYPE E70XX UNLESS NOTED OTHERWISE.
 3> ALL "STUB" (RUNNING) DIM'S ARE FROM END OF MAIN MEMBER (NOT R'S, CLIPS, ETC.). DIMENSION ORIGIN POINT MARKED THUS [●].
 4> ALL CLIPS AND SHEAR R'S TO HAVE 1 3/16" x 1" HORIZONTAL SLOTS (SSL), TYPICAL UNLESS NOTED OTHERWISE.
 5> PLACE SHIPPING MKS. RIGHT SIDE UP ON LEFT END OF MEMBER AS DRAWN, TYPICAL UNLESS NOTED OTHERWISE.
 6> ALL STEEL CLEANED IN ACCORDANCE WITH SSPC-SP1 & SSPC-SP3. PAINTING SHALL CONSIST OF LONG OR MEDIUM OIL, ALKYD, RUST-INHIBITIVE METAL PRIMER, COLOR=GRAY SHERWIN WILLIAMS E61RC21 RED (MIN. 3 MILS DFT), FOLLOWED BY 1 FINISH COAT OF LONG OIL, ALKYD COATING (MIN 2 MILS DFT) COATING (MIN. 2 MILS DFT) COLOR=GLOSS WHITE SHERWIN WILLIAMS B54 SERIES. HANDRAILS & GUARDS TO BE SAFETY YELLOW.

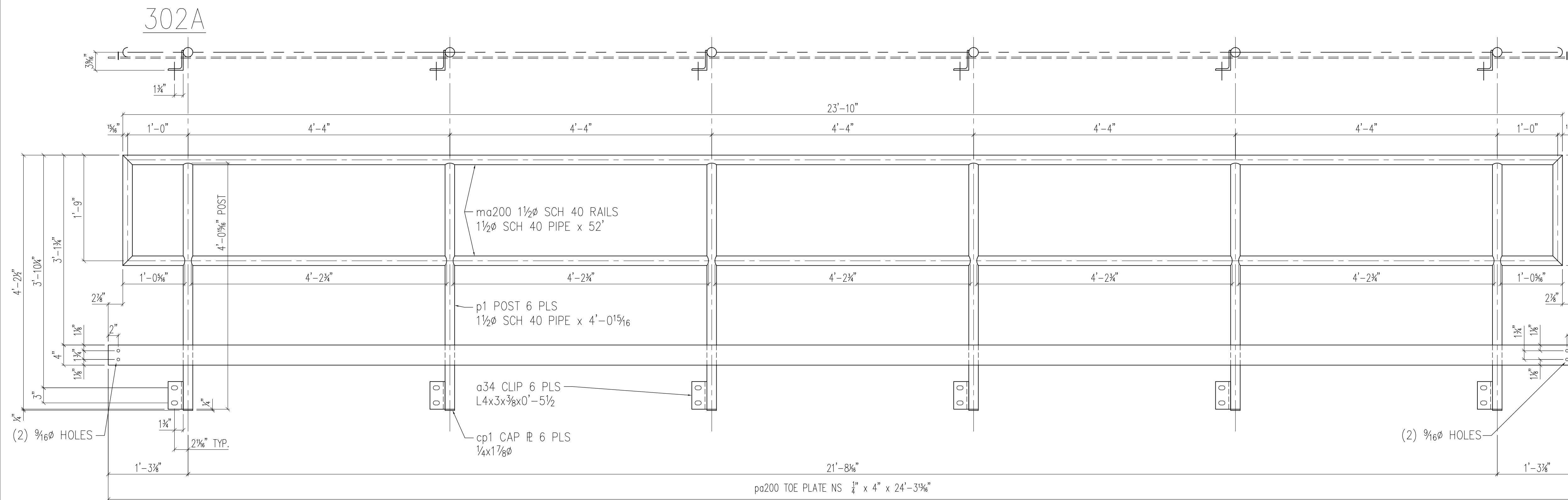
APPROVAL AUTHORITY
 UNLESS NOTED OTHERWISE, ALL CLOUDED ITEMS ARE REQUESTS FOR "PROVIDE" OR "VERIFY". ANY SUCH ITEMS NOT PROVIDED OR OTHERWISE NOTED, SHALL BE ASSUMED CORRECT AS SHOWN.

NO.	DATE	REVISION	BY	APP'D.	ELECTRODE CLASS
					E70XX

DESCRIPTION		HANDRAIL AREA 5-2	
REF DWG	5644-42000-S06	CUSTOMER/P.O. No.	GYPTech
		1514 Cargill Ave. WILSON, NC 27893 PHONE - (252) 246-0639 FAX - (252) 246-1616	
JOB No.	7728-FS	JOB TITLE	GYPTech
HOLES	1 3/16"	EXC NOTED	LOCATION
CLEAN SPEC	SEE GENERAL NOTES	ARCH OR ENDR.	MID-SOUTH ENGINEERING
FINISH	SEE GENERAL NOTES	DRAWN	MM DATE 2/1/11
DRY MIL THICKNESS	SEE GENERAL NOTES	STRUCTURE UNSTABLE UNTIL ERECTION IS COMPLETE.	ERECTOR TO GUY AS REQUIRED.

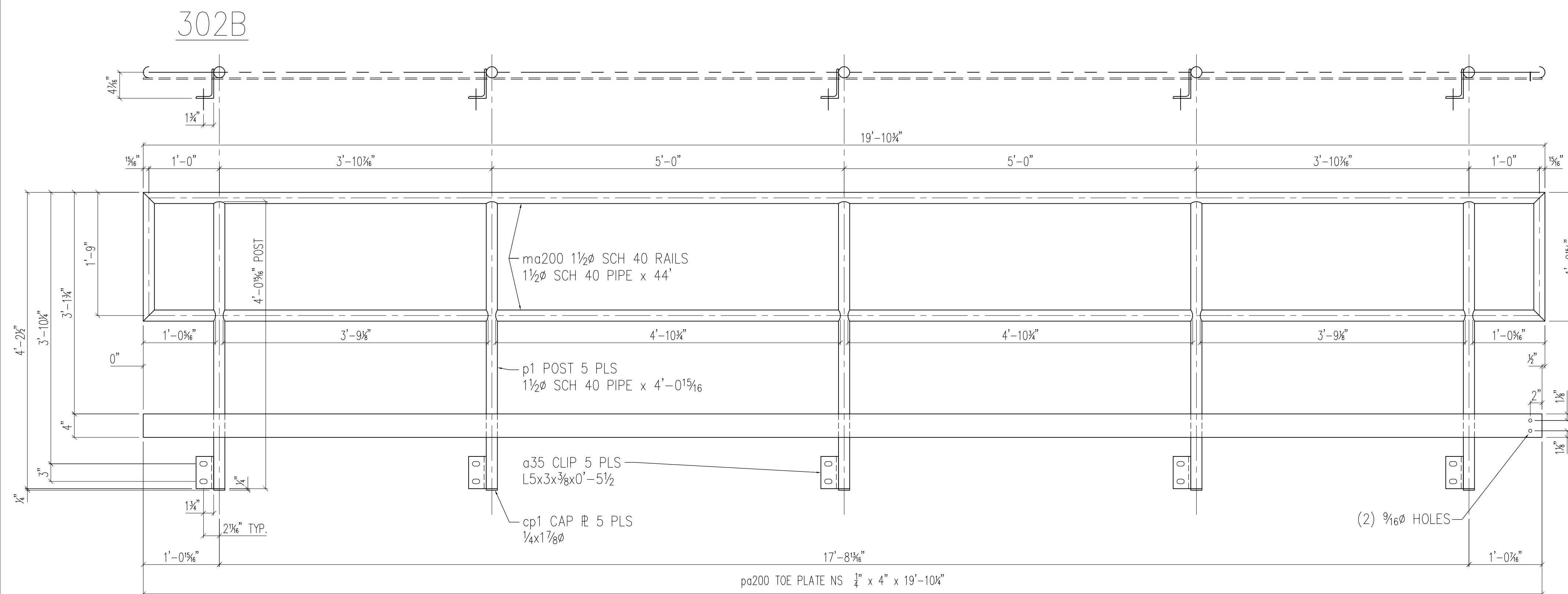
BILL OF MATERIAL

SHIP MK.	SUB MK.	QTY.	MATERIAL	LENGTH		REMARKS	ABM NO.	WT.
				FT.	IN.			
302A		1	HANDRAIL ASSY.					239
	ma200	1	1 1/2" STD PIPE	52	0			
	p1	6	1 1/2" STD PIPE	4	0 9/16	POST		
	pa200	1	BAR 1/4" x 4"	24	3 3/16			
	a34	6	L 4" x 3" x 3/8"	0	5 1/2			
	cp1	6	R 1/4" x 1 7/8"	0	1 7/8			
302B		1	HANDRAIL ASSY.					200
	ma200	1	1 1/2" STD PIPE	44	0			
	p1	5	1 1/2" STD PIPE	4	0 9/16	POST		
	pa200	1	BAR 1/4" x 4"	19	10 1/4			
	a35	5	L 5" x 3" x 3/8"	0	5 1/2			
	cp1	5	R 1/4" x 1 7/8"	0	1 7/8			



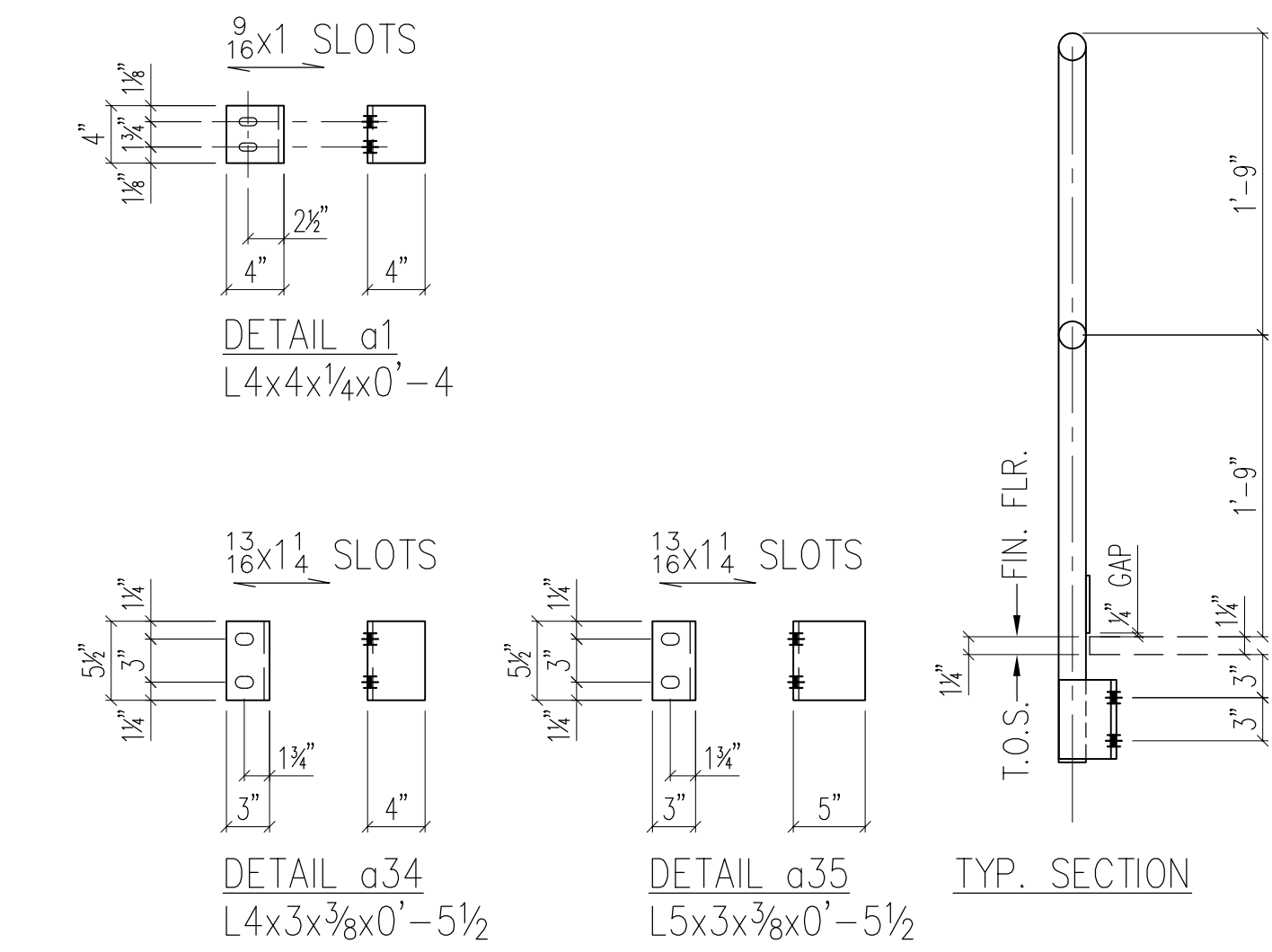
ONE ~ H'RAIL ~ 302A

(3/8" A-325-X BOLT) (1/2" A-307 BOLT)
 12 2 4 1 1/4
 w/(2)FW&HNN EA. w/(2)FW&HNN EA.



ONE ~ H'RAIL ~ 302B

(3/8" A-325-X BOLT) (1/2" A-307 BOLT)
 10 2 2 1 1/4
 w/(2)FW&HNN EA. w/(2)FW&HNN EA.



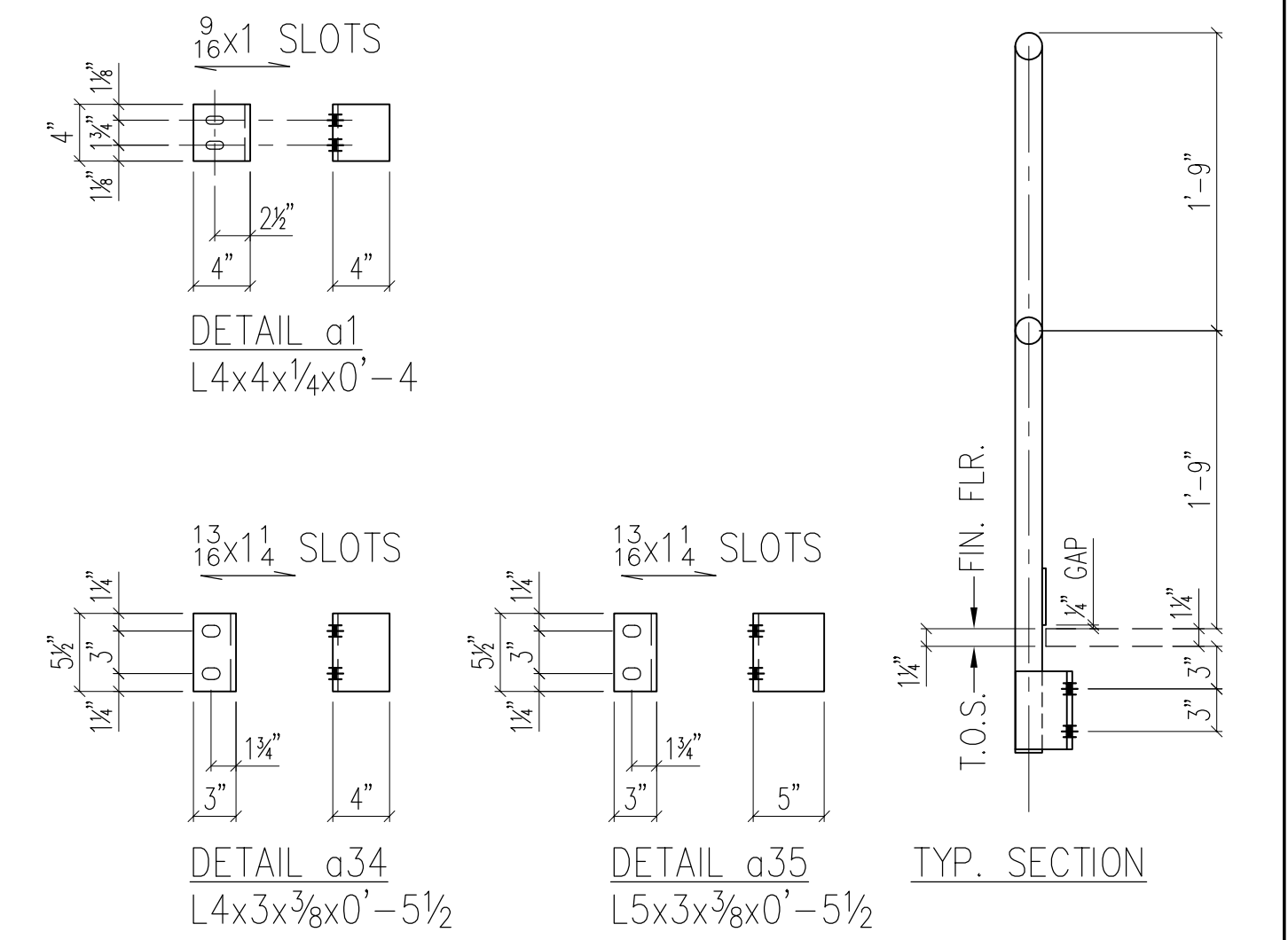
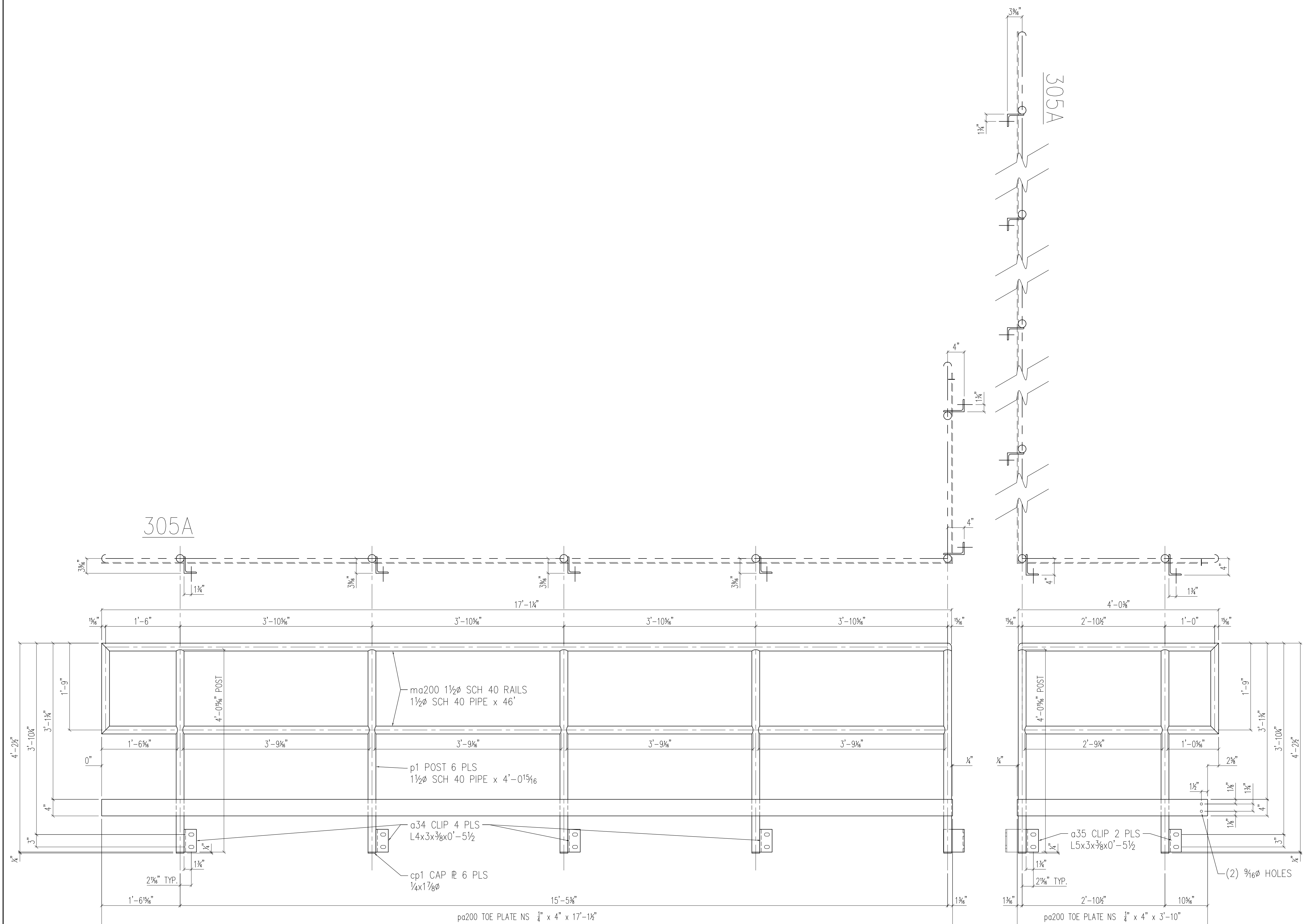
- GENERAL NOTES:**
- 1> ALL MATERIALS A-36 UNLESS NOTED OTHERWISE.
 - 2> ALL WELDS CONTINUOUS, TYPE E70XX UNLESS NOTED OTHERWISE.
 - 3> ALL "STUB" (RUNNING) DIM'S ARE FROM END OF MAIN MEMBER (NOT R'S, CLIPS, ETC.), DIMENSION ORIGIN POINT MARKED THUS [●].
 - 4> ALL CLIPS AND SHEAR R'S TO HAVE 1 3/16" x 1" HORIZONTAL SLOTS (SSL), TYPICAL UNLESS NOTED OTHERWISE.
 - 5> PLACE SHIPPING MKS. RIGHT SIDE UP ON LEFT END OF MEMBER AS DRAWN, TYPICAL UNLESS NOTED OTHERWISE.
 - 6> ALL STEEL CLEANED IN ACCORDANCE WITH SSPC-SP1 & SSPC-SP3. PAINTING SHALL CONSIST OF LONG OR MEDIUM OIL, ALKYD, RUST-INHIBITIVE METAL PRIMER, COLOR=GRAY SHERWIN WILLIAMS E61RC21 RED (MIN. 3 MILS DFT), FOLLOWED BY 1 FINISH COAT OF LONG OIL, ALKYD COATING (MIN 2 MILS DFT) COATING (MIN. 2 MILS DFT) COLOR=GLOSS WHITE SHERWIN WILLIAMS B54 SERIES. HANDRAILS & GUARDS TO BE SAFETY YELLOW.

APPROVAL AUTHORITY
 UNLESS NOTED OTHERWISE, ALL CLOUDED ITEMS ARE REQUESTS FOR "PROVIDE" OR "VERIFY". ANY SUCH ITEMS NOT PROVIDED OR OTHERWISE NOTED, SHALL BE ASSUMED CORRECT AS SHOWN.

DESCRIPTION		HANDRAIL AREA 5-2		
REF DWG	5644-42000-S06	CUSTOMER/ P.O. No.	GYPTech	
-ALL WF BEAMS TO BE A992, GR50 -PRIME AND PAINT PER SPECS -ALL PLATES, ANGLES, CHANNELS TO BE A36		1514 Cargill Ave. WILSON, NC 27893 PHONE - (252) 246-0639 FAX - (252) 246-1616		
JOB No.	7728-FS	JOB TITLE	GYPTech	
HOLES	1 3/16"	EXC NOTED	LOCATION	ROXBORO, NC
CLEAN SPEC	SEE GENERAL NOTES	ARCH OR ENDR	MID-SOUTH ENGINEERING	
FINISH	SEE GENERAL NOTES	DRAWN	MM DATE 2/1/11	
DRY MIL THICKNESS	SEE GENERAL NOTES	STRUCTURE UNSTABLE UNTIL ERECTION IS COMPLETE. ERECTOR TO GUY AS REQUIRED.		
NO.	DATE	REVISION	BY APP'D. E70XX	

BILL OF MATERIAL

SHIP MK.	SUB MK.	QTY.	MATERIAL	LENGTH		REMARKS	ABM NO.	WT.
				FT.	IN.			
305A		1	HANDRAIL ASSY.					210
	ma200	1	1 1/2" STD PIPE	46	0			
	p1	6	1 1/2" STD PIPE	4	0 5/16	POST		
	pa200	1	BAR 1/4"x4"	17	1 1/2			
	pa200	1	BAR 1/4"x4"	3	10			
	a34	4	L 4"x3"x3/8"	0	5 1/2			
	a35	2	L 5"x3"x3/8"	0	5 1/2			
	cp1	6	R 1/4"x1 1/8"	0	1 7/8			



ONE ~ H'RAIL ~ 305A

(3/8" A-325-X BOLT) (1/2" A-307 BOLT)
 12 2 2 1 1/4
 w/(2)FW&HHN EA. w/(2)FW&HHN EA.

APPROVAL AUTHORITY
 UNLESS NOTED OTHERWISE, ALL CLOUDED ITEMS ARE REQUESTS FOR "PROVIDE" OR "VERIFY". ANY SUCH ITEMS NOT PROVIDED OR OTHERWISE NOTED, SHALL BE ASSUMED CORRECT AS SHOWN.

- GENERAL NOTES:**
- 1> ALL MATERIALS A-36 UNLESS NOTED OTHERWISE.
 - 2> ALL WELDS CONTINUOUS, TYPE E70XX UNLESS NOTES OTHERWISE.
 - 3> ALL "STUB" (RUNNING) DIM'S ARE FROM END OF MAIN MEMBER (NOT R's, CLIPS, ETC.), DIMENSION ORIGIN POINT MARKED THUS [●].
 - 4> ALL CLIPS AND SHEAR R's TO HAVE 1 3/16" x 1" HORIZONTAL SLOTS (SSL), TYPICAL UNLESS NOTED OTHERWISE.
 - 5> PLACE SHIPPING MKS. RIGHT SIDE UP ON LEFT END OF MEMBER AS DRAWN, TYPICAL UNLESS NOTED OTHERWISE.
 - 6> ALL STEEL CLEANED IN ACCORDANCE WITH SSPC-SP1 & SSPC-SP3. PAINTING SHALL CONSIST OF LONG OR MEDIUM OIL, ALKYD, RUST-INHIBITIVE METAL PRIMER, COLOR=GRAY SHERWIN WILLIAMS E61RC21 RED (MIN. 3 MILS DFT), FOLLOWED BY 1 FINISH COAT OF LONG OIL, ALKYD COATING (MIN 2 MILS DFT) COATING (MIN. 2 MILS DFT) COLOR=GLOSS WHITE SHERWIN WILLIAMS B54 SERIES. HANDRAILS & GUARDS TO BE SAFETY YELLOW.

-ALL WF BEAMS TO BE A992, GR50	
-PRIME AND PAINT PER SPECS	
-ALL PLATES, ANGLES, CHANNELS TO BE A36	

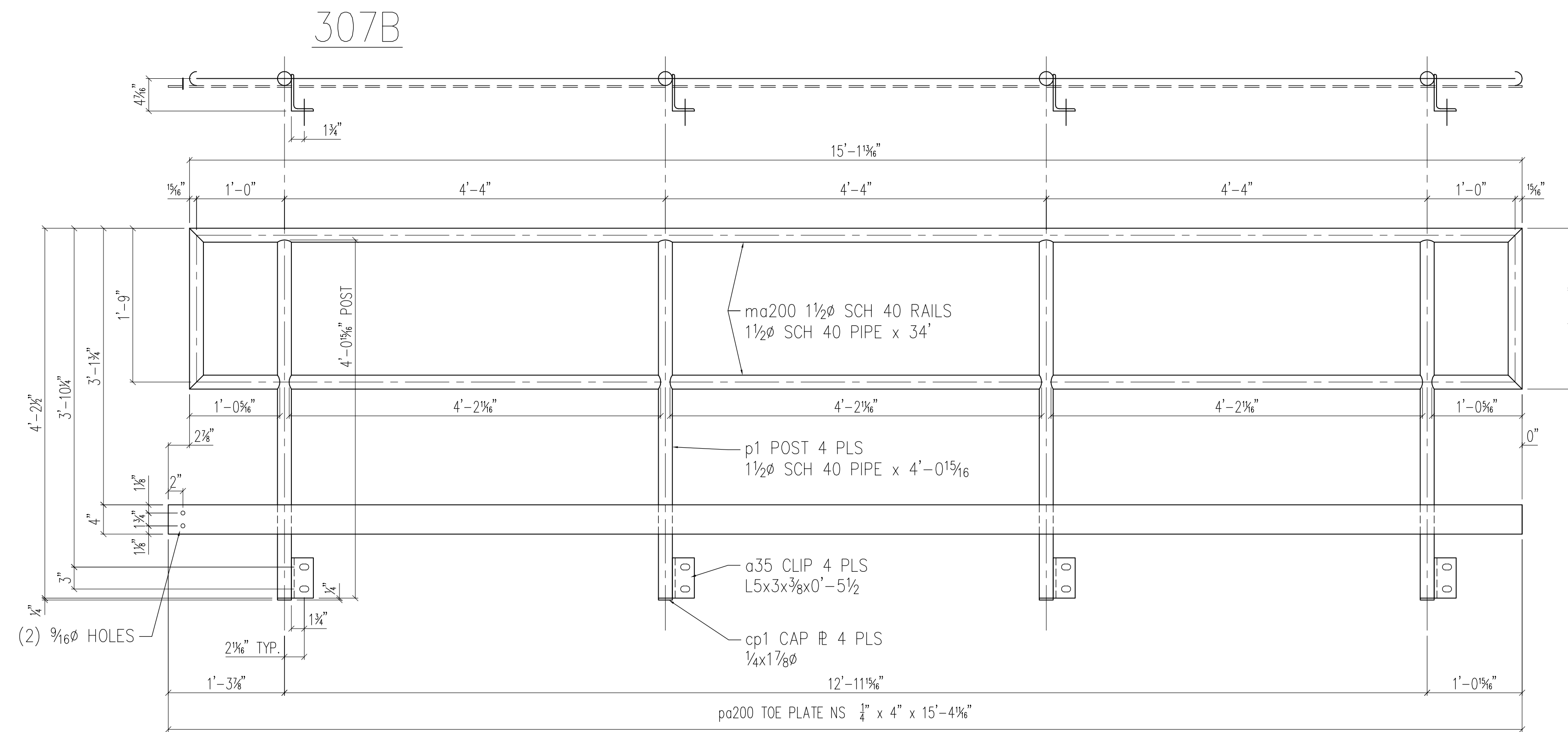
DESCRIPTION HANDRAIL AREA 5-2		CUSTOMER/ P.O. No.	GYPTech
REF. DWG.	5644-42000-S06		
		1514 Cargill Ave. WILSON, NC 27893	
		PHONE - (252) 246-0639 FAX - (252) 246-1616	
JOB NO.	7728-FS	JOB TITLE	GYPTech
HOLES	1 3/16" Ø	LOCATION	ROXBORO, NC
CLEAN SPEC.	SEE GENERAL NOTES	ARCH. OR ENGR.	MID-SOUTH ENGINEERING
FINISH	SEE GENERAL NOTES	DRAWN	MM DATE 2/1/11
DRY MIL THICKNESS	SEE GENERAL NOTES	STRUCTURE UNSTABLE UNTIL ERECTION IS COMPLETE. ERECTOR TO GUY AS REQUIRED.	
NO.	DATE	REVISION	BY APP'D. E70XX

DRAWING NO.
305

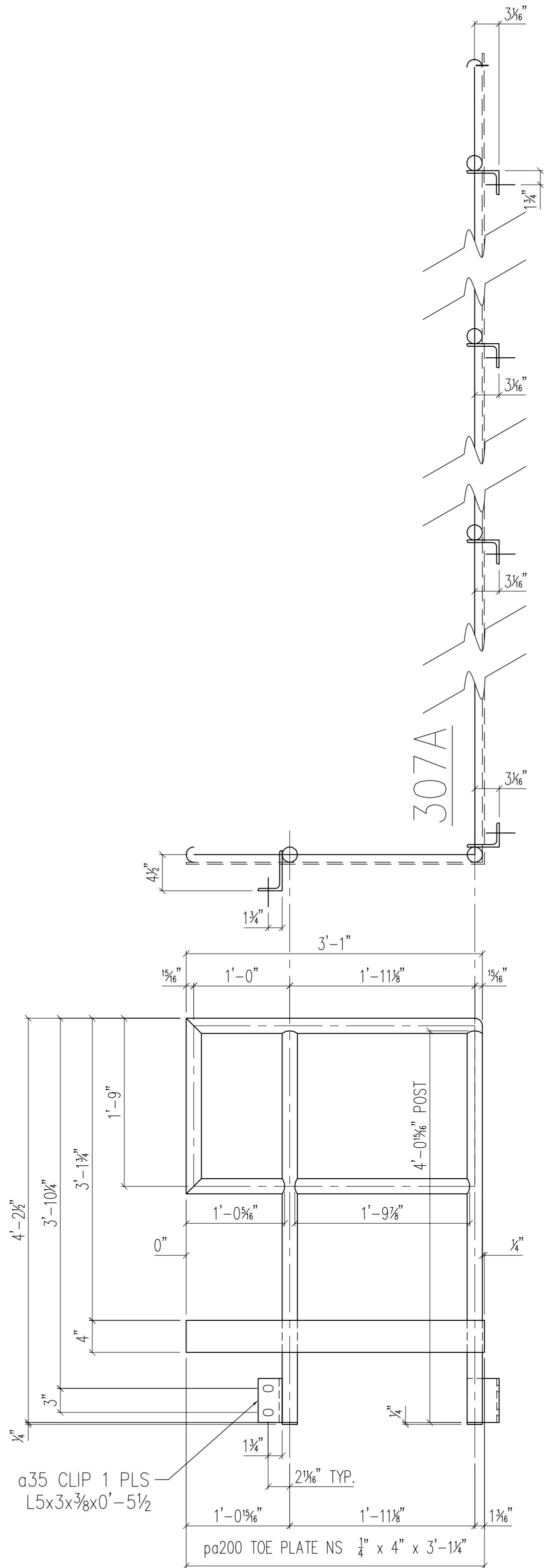
REV NO.
0

BILL OF MATERIAL

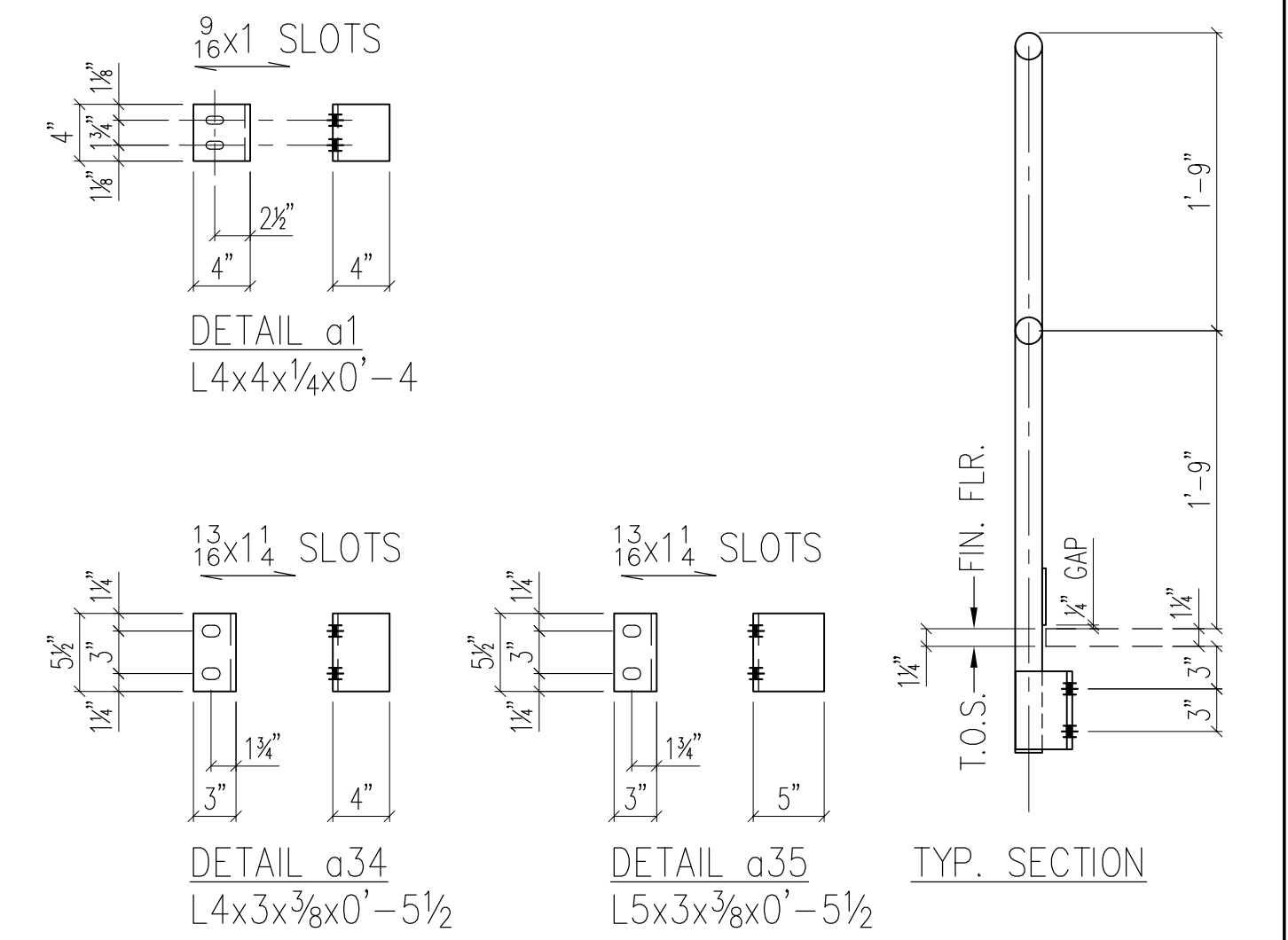
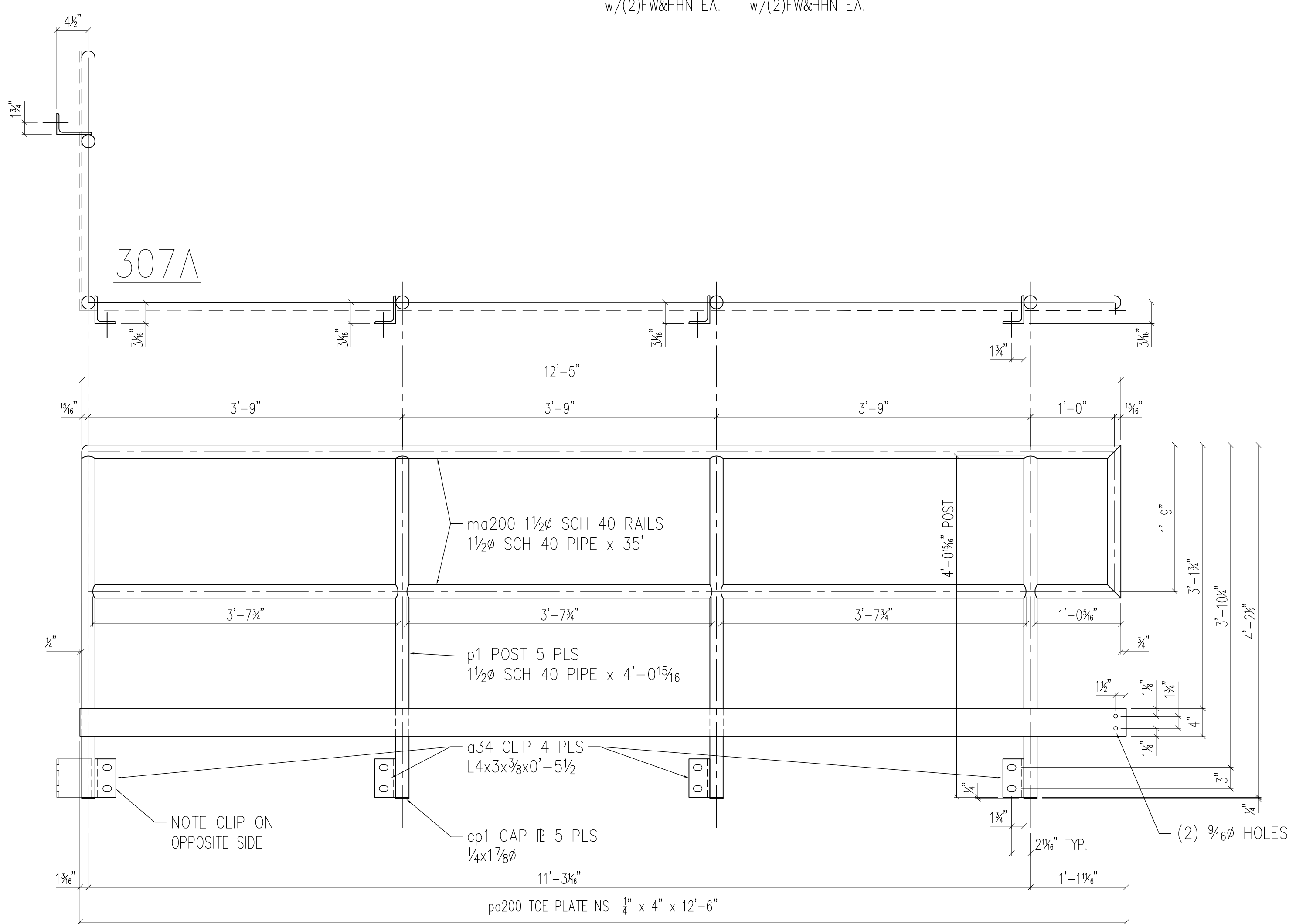
SHIP MK.	SUB MK.	QTY.	MATERIAL	LENGTH		REMARKS	ABM NO.	WT.
				FT.	IN.			
307A		1	HANDRAIL ASSY.					154
	ma200	1	1 1/2" STD PIPE	35	0			
	p1	5	1 1/2" STD PIPE	4	0 9/16	POST		
	pa200	1	BAR 1/4" x 4"	3	1 1/4			
	pa200	1	BAR 1/4" x 4"	12	6			
	a34	4	L 4" x 3 3/8" x 3/8"	0	5 1/2			
	a35	1	L 5" x 3" x 3/8"	0	5 1/2			
	cp1	5	R 1/4" x 1 7/8"	0	1 7/8			
307B		1	HANDRAIL ASSY.					152
	ma200	1	1 1/2" STD PIPE	34	0			
	p1	4	1 1/2" STD PIPE	4	0 9/16	POST		
	pa200	1	BAR 1/4" x 4"	15	4 11/16			
	a35	4	L 5" x 3" x 3/8"	0	5 1/2			
	cp1	4	R 1/4" x 1 7/8"	0	1 7/8			



ONE ~ H'RAIL ~ 307B
 (3/8" A-325-X BOLT) (1/2" A-307 BOLT)
 8 2 w/(2)FW&HHN EA. 2 1 1/4 w/(2)FW&HHN EA.




ONE ~ H'RAIL ~ 307A
 (3/8" A-325-X BOLT) (1/2" A-307 BOLT)
 10 2 w/(2)FW&HHN EA. 2 1 1/4 w/(2)FW&HHN EA.



- GENERAL NOTES:
 1> ALL MATERIALS A-36 UNLESS NOTED OTHERWISE.
 2> ALL WELDS CONTINUOUS, TYPE E70XX UNLESS NOTED OTHERWISE.
 3> ALL "STUB" (RUNNING) DIM'S ARE FROM END OF MAIN MEMBER (NOT R's, CLIPS, ETC.), DIMENSION ORIGIN POINT MARKED THUS [O].
 4> ALL CLIPS AND SHEAR R's TO HAVE 1 3/16" x 1" HORIZONTAL SLOTS (SSL), TYPICAL UNLESS NOTED OTHERWISE.
 5> PLACE SHIPPING MKS. RIGHT SIDE UP ON LEFT END OF MEMBER AS DRAWN, TYPICAL UNLESS NOTED OTHERWISE.
 6> ALL STEEL CLEANED IN ACCORDANCE WITH SSPC-SP1 & SSPC-SP3. PAINTING SHALL CONSIST OF LONG OR MEDIUM OIL, ALKYD, RUST-INHIBITIVE METAL PRIMER, COLOR=GRAY SHERWIN WILLIAMS E61RC21 RED (MIN. 3 MILS DFT), FOLLOWED BY 1 FINISH COAT OF LONG OIL, ALKYD COATING (MIN 2 MILS DFT) COATING (MIN. 2 MILS DFT) COLOR=GLOSS WHITE SHERWIN WILLIAMS B54 SERIES. HANDRAILS & GUARDS TO BE SAFETY YELLOW.

APPROVAL AUTHORITY
 UNLESS NOTED OTHERWISE, ALL CLOUDED ITEMS ARE REQUESTS FOR "PROVIDE" OR "VERIFY". ANY SUCH ITEMS NOT PROVIDED OR OTHERWISE NOTED, SHALL BE ASSUMED CORRECT AS SHOWN.

DESCRIPTION		HANDRAIL AREA 5-2	
REF DWG	5644-42000-S06	CUSTOMER/ P.O. No.	GYPTech
-ALL WF BEAMS TO BE A992, GR50 -PRIME AND PAINT PER SPECS -ALL PLATES, ANGLES, CHANNELS TO BE A36			
JOB No.	7728-FS	JOB TITLE	GYPTech
HOLES	1 3/16"	EXC NOTED	ROXBORO, NC
CLEAN SPEC	SEE GENERAL NOTES	ARCH OR ENDR	MID-SOUTH ENGINEERING
FINISH	SEE GENERAL NOTES	DRAWN	MM DATE 2/1/11
DRY MIL THICKNESS	SEE GENERAL NOTES	STRUCTURE UNSTABLE UNTIL ERECTION IS COMPLETE. ERECTOR TO GUY AS REQUIRED.	
NO.	DATE	REVISION	BY APP'D. E70XX